

KINGRINDER MANUAL HAND COFFEE GRINDER MANUAL

MODLE: K7



WHAT'S IN THE BOX

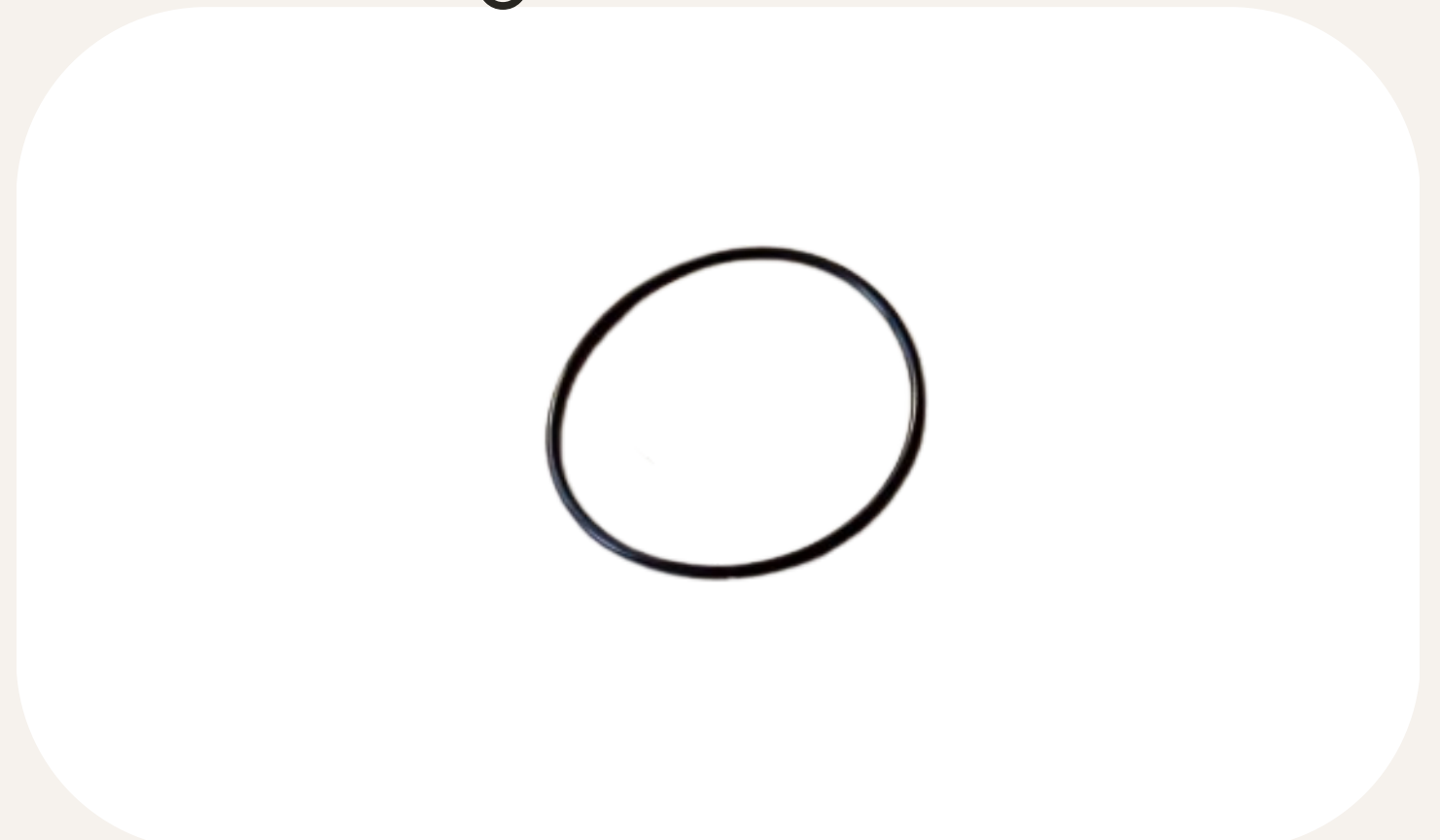
- Grinder



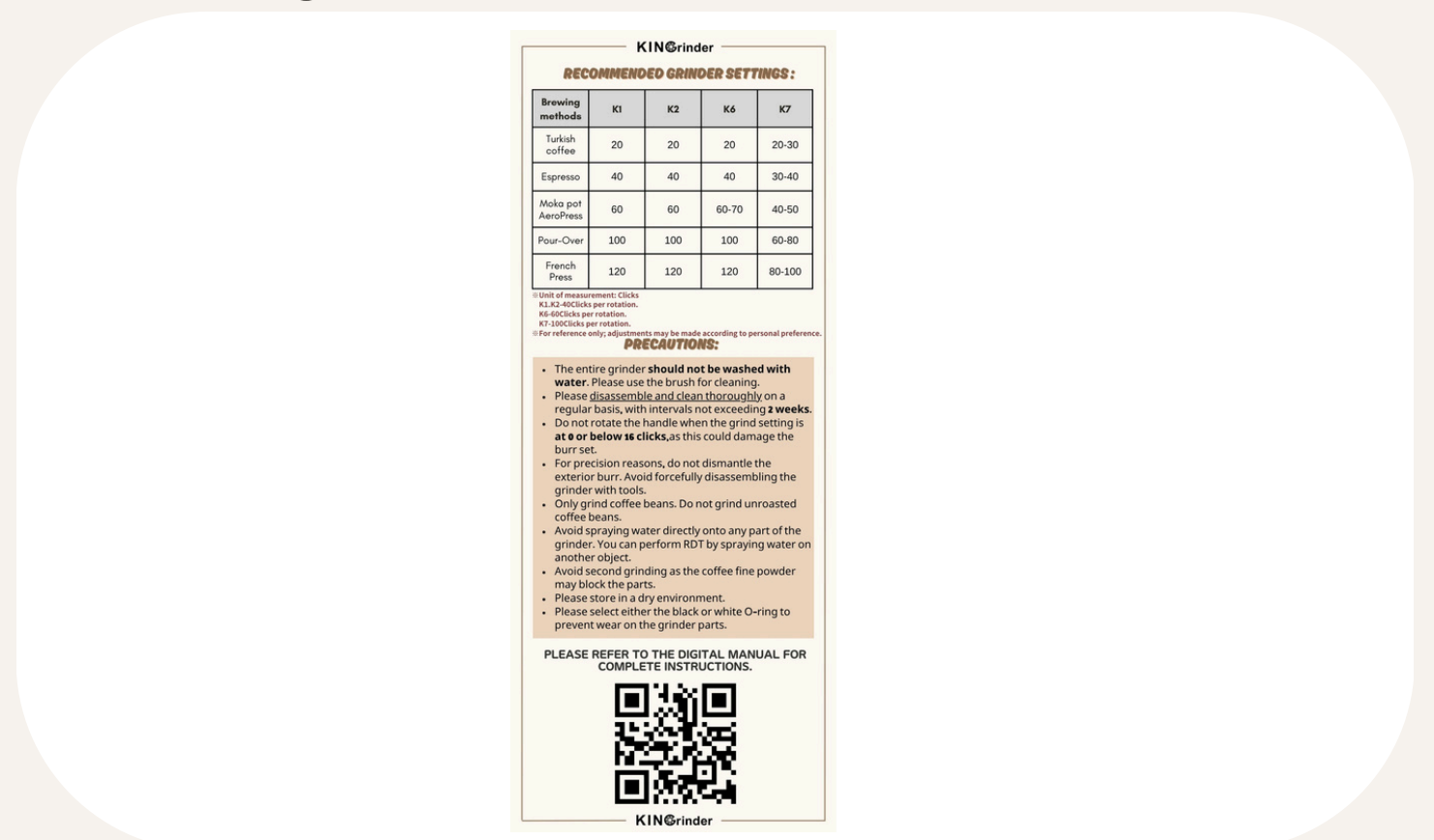
- Handle & Plastic lid



- Black o-ring



- Quick guide



- Brush



HOW TO OPERATE THE GRINDER?

1. Zeroing : Gently turn the adjustment nut counterclockwise until it stops.
2. Rotate the zero point nut until it aligns with the number zero.
3. Turn the adjustment nut clockwise until you reach the recommended grind setting (please refer to the table below).
4. Pour coffee beans into the grinder from the top.
5. Install the handle and start grinding.

If the zero point nut shifts after grinding, you just need to repeat steps 1 and 2.



RECOMMENDED GRINDER SETTINGS

Brewing methods	K7
Turkish coffee	20-30
Espresso	30-40
Moka pot AeroPress	40-50
Pour-Over	60-80
French Press	80-100

※Do not grind below 15 clicks.

※One round is equivalent to 100 clicks.

※For reference only; adjustments may be made according to personal preference.

HOW TO CLEAN THE GRINDER?

Disassembly:

1. Turn the adjustment nut clockwise to the end stop at the **coarsest setting**.
2. Push upward continuously from the bottom of the burr while simultaneously keeping the burr stationary.
3. Use your fingertips to push the fastener, aligning any one **flat side** of the hexagonal shaft with the dot on the fastener.
4. Remove all parts in order. There is no need to remove the adjustment nut.
5. Use a brush or air blower to thoroughly remove any remaining coffee grounds.

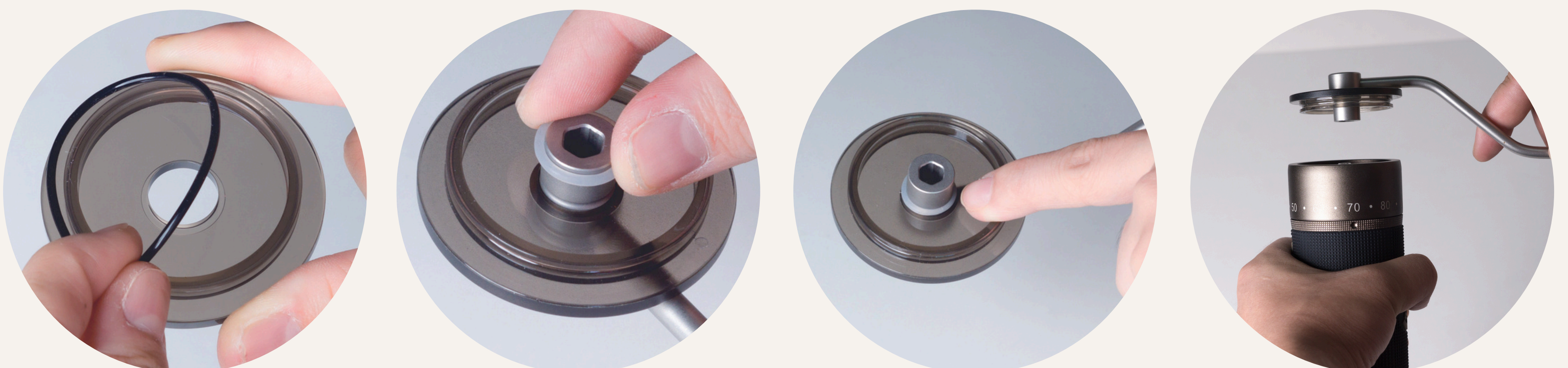
Assembly:

1. Place the parts back in order.
2. Push upward continuously from the bottom of the burr while keeping the burr from rotating.
3. Use your fingertips to push the fastener, aligning any one of the hexagonal shaft's **corners** with the dot on the fastener.



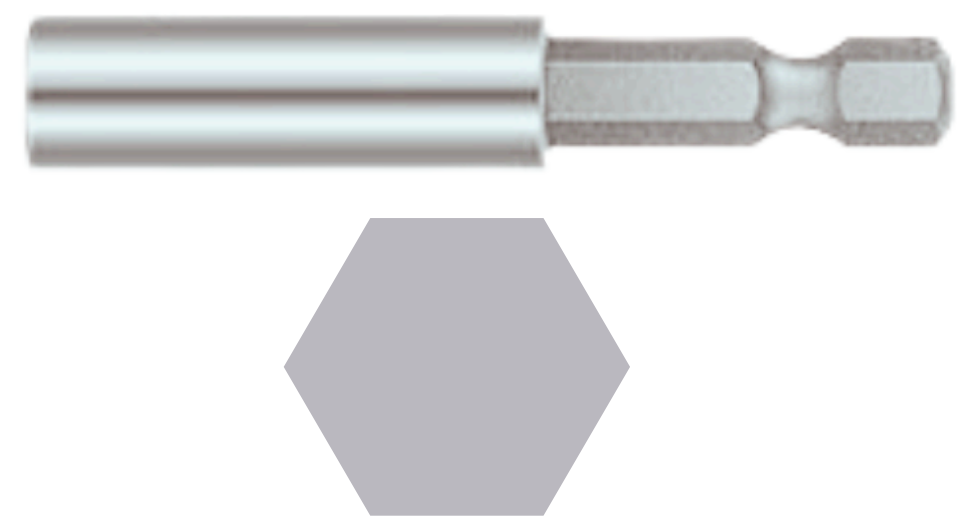
HOW TO ASSEMBLE THE PLASTIC LID AND HANDLE?

1. **Take out the black O-ring** from the groove on the plastic lid.
2. Insert the provided white O ring.
3. Ensure that **the white O-ring is correctly installed into the groove** on the handle for proper fixation.



HOW TO USE IT BY ELECTRIC?

You need to prepare:



Electric screwdriver at a **15~25Nm torque**. **6.35mm(1/4 inch) Hex Shank**.



Take out the handle and install the black O-ring to the PC lid.



Ensure that the bit holder is fully inserted into the center shaft, grasp the grinder firmly, and gradually apply power.

Slow down the grinding speed to prevent damage to the central shaft.

PRECAUTIONS:

1. The entire grinder **should not be washed with water**. Please use the brush for cleaning.
2. Please disassemble and clean thoroughly on a regular basis, with intervals **not exceeding 30 days**.
3. Do not rotate the handle when the grind setting is **at 0 or below 15 clicks**, as this could damage the burr set.
4. For precision reasons, do not dismantle the exterior burr. Avoid forcefully disassembling the grinder with tools.
5. Only grind coffee beans. Do not grind unroasted coffee beans.
6. Avoid spraying water directly onto any part of the grinder. You can perform RDT by spraying water on another container.
7. Avoid second grinding as the coffee fine powder may block the parts.
8. Please store in a dry environment.
9. It's normal for the zero point nut to shift after grinding, you just need to realign it.